



# Mobile Ambulatory

A specialized vehicle adapted to perform the function of a medical unit

The company Alpinus Chemia offers a Mercedes-Benz Tourino model, which was manufactured in accordance with the requirements for medical and special transport.

The greatest advantage of this vehicle is the versatility of its use.

The vehicle meets the formal and functional conditions of a large medical ambulance and is equipped with electricity, heating and lighting. Allowing to work in any location.

The vehicle is an excellent base for: a mobile medical facility, a vaccination point, an outpatient clinic, a mobile examination point or a medical point for patients in need of immediate medical assistance (including hospital).

It is adapted to transport 7 people (including one in a lying position), and thanks to the installed elevator, it is also easy to transport seriously ill, injured and disabled people.

The dimensions of the lift and its location on the side of the vehicle allow the patient to be quickly transported in a lying position inside the vehicle, together with a rescuer and medical equipment. A large platform allows us to easily transport all the necessary equipment and medical devices to which the patient is connected.

In 2021, the vehicle functioned as a mobile vaccination point against Covid-19.

In 2022, it was transformed into a mobile medical aid point in order to help refugees from Ukraine on the Polish-Ukrainian border.



## VEHICLE DATA:

Year of production: 2010

Mileage: ~ 91000 km

VIN number: WEB44430313000488

Technical inspection: valid until 04/29/2024

Insurance: valid until 04/13/2024

**If you are interested in purchasing, please contact us by phone or e-mail:**

tel. +48 662 312 570 or +48 696 473 280

e-mail: [biuro@alpinuschemia.com](mailto:biuro@alpinuschemia.com)



# EQUIPMENT

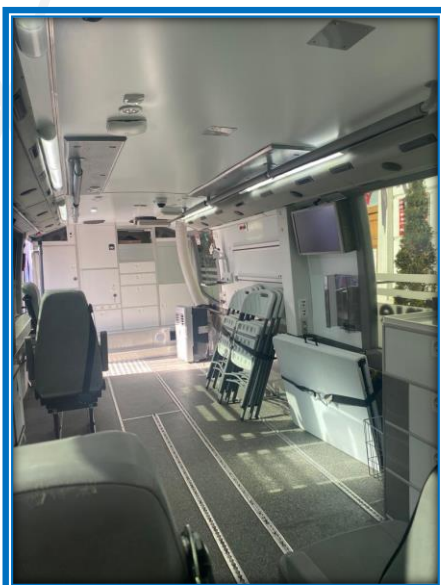


- ✓ seats
- ✓ set of medical cabinets
- ✓ light and sound signalization
- ✓ power inverter 24/12V
- ✓ power interver 230V
- ✓ power generator
- ✓ interior lights
- ✓ cooling box
- ✓ thermobox

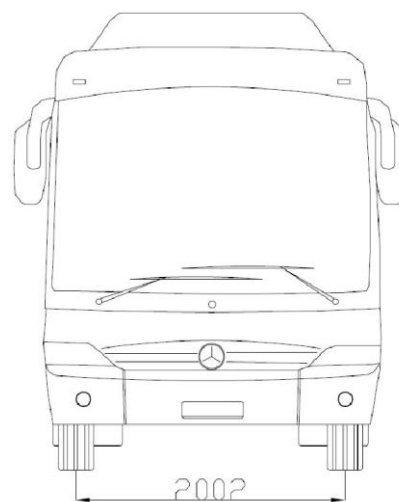
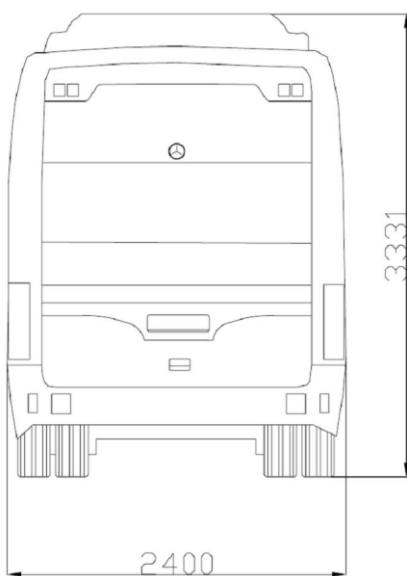
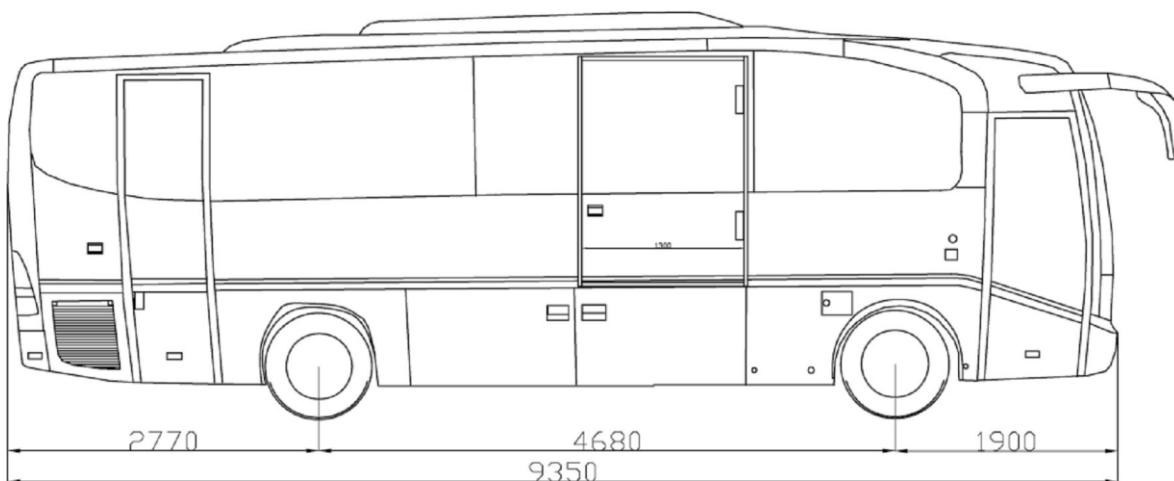
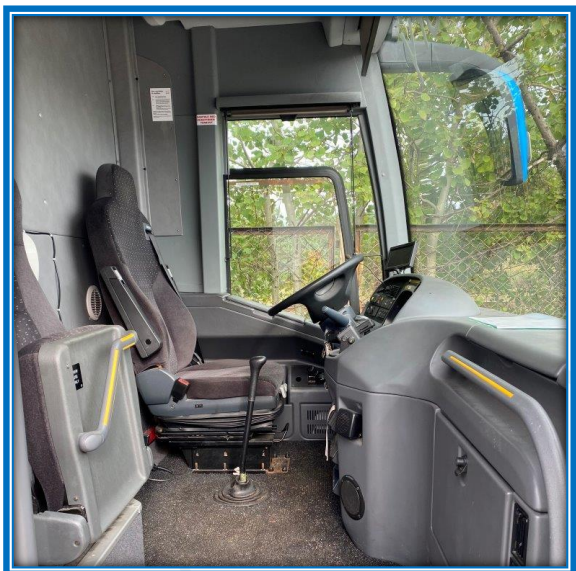
- ✓ set of cameras + monitor in driver's compartment
- ✓ lift (lifting capacity 1000 kg)
- ✓ hospital bed montage rails
- ✓ 3 monitors in medical compartment
- ✓ air conditioning
- ✓ heating
- ✓ electrical hatch roof
- ✓ foldable tables

- ✓ window between driver's compartment and medical compartment
- ✓ air and oxygen installation
- ✓ solar panel on the roof
- ✓ fold-out tent
- ✓ monitoring
- ✓ intercom









**ALPINUS CHEMIA Spółka z o.o.**  
 ul. Garbary 5  
 86-050 Solec Kujawski  
 NIP: 5581806775  
 tel. 52 387 16 65 / 662 312 570  
 biuro@alpinuschemia.com